

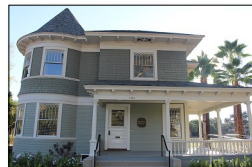
## Map of CLAREMONT CA HISTORIC SITES



Seaver House



United States Post Office



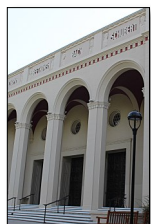
Renwick House



Carnegie Library



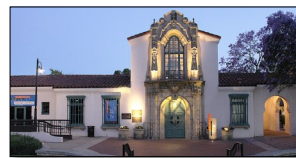
Rio de Ojas  
(Originally Claremont Book & Drug)



Bridges Auditorium



The Old School House



Claremont  
Depot

## HISTORIC SITES An Overview

- 6 CITY HALL** (1925/reno 1999) 207 N. Harvard Ave.
- 7 CLAREMONT BOOK & DRUG** (1935)  
250 N. Harvard Ave. Now home of Rio de Ojas.
- 9 COLLEGE HEIGHTS PACKING HOUSE** (1922)  
532 W. First St. Now multi-use bldg. Shop, dine, etc.
- 10 DEPOT** (1927) 200 W. First St.  
Now home to Claremont Museum of Art.
- 3 GARNER HOUSE** (1926) 200 W. First St.  
Now home to Claremont Heritage.
- 5 HARVARD SQUARE** (early 1940s) 206 W. Bonita  
Opened as Village Theater. Now a multi-use bldg.
- 2 OLD SCHOOL HOUSE** (1930s) 415 W. Foothill Blvd.  
Opened as Claremont High School. Now multi-use.
- 1 PADUA HILLS THEATRE** (1930) 4467 Padua Ave.  
It was longest-running theater featuring Mexican-themed musicals in the U.S. Now special events.

## THE CLAREMONT COLLEGES:

- 1 CARNEGIE LIBRARY** (1908) 450 N. College Ave.
- 2 SEAVER HOUSE** (1979 - moved to Claremont)  
301 N. College Ave. Pomona College Alumni Office
- 3 SUMNER HOUSE** (1887) 105 College Ave.  
Pomona College guest house
- 4 BRIDGES AUDITORIUM** (1932)  
450 N. College Way
- 5 BRIDGES HALL OF MUSIC** (1915) 150 E. Fourth

## Treat Yourself Like A Tourist

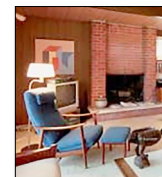


## DOCENT-LED GUIDED WALKING TOURS



### The Claremont Colleges 2023: Sat. June 24 | Sept. 23

9:30am-12noon / \$10 / Reservations req'd: 909.621.0848  
(History and architecture • Not intended for potential students.)



### 41st Annual Home Tour ART & ARCHITECTURE

Sunday October 8 | 10am-4pm

Check-in at GARNER HOUSE / Memorial Park  
Tickets on sale Sept. 1st

Brochure Compliments of Claremont Heritage

## CLAREMONT A Pictorial History by Judy Wright

Available at Claremont Heritage Gift Gallery  
and at our online shop: ClaremontHeritage.org

## CLAREMONT EVENTS *today*



**Read more about them!**

ClaremontEvents.com

### CLAREMONT FARMERS & ARTISANS MARKET

Sundays 8am-1pm • Harvard Ave - First St to Bonita Ave

## SUMMERTIME IN CLAREMONT

### FRIDAY NIGHTS LIVE!

**May thru Oct • 6-9pm • 3 music venues in Claremont Village**  
Village Square Public Plaza | Shelton Park | Chamber Patio

### FIRST SATURDAY ART WALK

**Year 'round • 6-9pm • See listings in the Claremont Courier**

### CLAREMONT VILLAGE CRAFT BEER WALK

**Sat. June 17 • 3:30-7:30pm • ClaremontVillage.com**

Produced by Claremont Village Marketing Group

### FUN RUN at Memorial Park thru Claremont Village

**Sat. July 1 • More details at ClaremontEvents.com**

7:30am 1K Kids Fun Run / 8:00am 5K Run / 8:05am 5K Walk

### JULY 4TH CELEBRATION

**Memorial Park • Festival 9am-2pm / Parade • 10am**

**Pancake Breakfast 7-10am** Fundraiser by Kiwanis Club

**Fireworks Show • Gates Open at 6:30pm / Tickets: \$10**

Strehle Track at Pomona College / Concert by Upstream

### MONDAY NIGHT CONCERTS in MEMORIAL PARK

**July 10 - Aug 28 • 7:00pm • Free Admission**

### MOVIES IN THE PARK

**Thursdays July 6 - 27 • 7:30pm • Free - Various Parks!**

### NATIONAL NIGHT OUT in MEMORIAL PARK

**Aug 1 • 6:00pm • Movie at dusk: "The League of Superpets"**



### Measure for Measure • The Pirates of Penzance

Selected Dates July 13-23 | OpheliasJump.org

Sontag Greek Theatre Pomona College

## CLAREMONT Galleries / Museums & More

*An Overview - More listed at ClaremontToday.com*

### FIRST SATURDAY ART WALK

6-9pm Monthly • ClaremontVillage.com



### CLAREMONT LEWIS MUSEUM OF ART

200 W. First St. (Depot)

General Admission: \$5

Open Friday-Sunday 12noon-4pm

First Saturdays monthly 6-9pm

909.621.3200 • CLMOA.org

### CALIFORNIA BOTANIC GARDEN

1500 N. College Ave, Claremont

CALBG.org • 909.625.8767

Gen'l Admission: \$12 . Open Tues-Sun

Closed Jan 1, July 4, Dec 25, Thanksgiving



### RAYMOND M. ALF MUSEUM OF PALEONTOLOGY



Located at The Webb Schools

1175 W. Base Line Rd

AlfMuseum.org • 909.624.2798

Contact Museum for special hours  
during construction in June 2023.

Gen'l Admission: \$12

### FOLK MUSIC CENTER and MUSEUM

220 Yale Ave. • 909.624-2928

Open Tuesday-Saturday

FolkMusicCenter.com



### PETTERSON MUSEUM OF INTERCULTURAL ART

**Pilgrim Place** 730 Plymouth Place • 909.399.5544

PilgrimPlace.org • Saturdays 10:00am-4:00pm

## HIKING TRAILS City of Claremont • ClaremontCA.org

### Claremont Hills Wilderness Park

Located at the base of the San Gabriel Mountains and the Angeles National Forest. Park offers a five mile walking loop and smaller trails. Permitted parking is available at lots on Mills Ave and Mt. Baldy Rd.

### Thompson Creek Trail

The 2.8-mile trail is accessible from many points along its route including Base Line Road, Higginbotham Park, North Indian Hill Blvd, several cul-de-sacs and Pomello Drive.



**CLAREMONT HERITAGE**

Open Mon-Fri 10am-3pm

Memorial Park - Claremont

840 N. Indian Hill Blvd.

Keeping Claremont's History *Lively!*

**909.621.0848** / info@ClaremontHeritage.org

Mailing Address: PO Box 742, Claremont CA 91711



Watercolor by Jim Fuller

**Located at historic  
GARNER HOUSE  
In Memorial Park**

**GARNER HOUSE** (aka "Claremont's House") has been home to Claremont Heritage since 2001. Herman and Bess Garner built it for their family in 1926-27.

**RENTAL VENUES** are available for special occasions including weddings, receptions, meetings and art exhibits

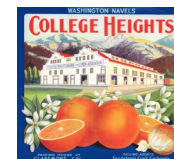
### GIFT GALLERY

includes a wide variety of items:

Citrus Fruit Crate Labels • Books

Mugs • Cards • Aprons & more

Select items in our online shop, too



### CLAREMONT HERITAGE

ClaremontHeritage.org



### CLAREMONT EVENTS

ClaremontEvents.com

### CLAREMONT TODAY

ClaremontToday.com



### TREASURY OF CLAREMONT MUSIC

TreasuryOfClaremontMusic.com

**Become a Claremont Heritage Member. Ask Us How.**